

FLOORPLAN OPTIONS

We personalise our floorplans. Talk to us about our huge range of ready-to-go design options.

Facades available:

Lachlan, Barrington, Flinders	
Cooper, Nepean, Austin	
Overall home width	8.99m
Overall home length	22.79m

Residence	140.8m ²	15.2sq
Garage	22.1m ²	2.4sq
Porch	3.7m ²	0.4sq
Alfresco	11.5m ²	1.2sq
Total	178.2m²	19.2sq

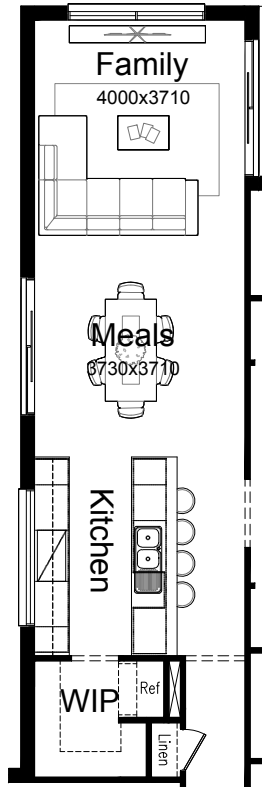
Listed details based on Lachlan facade floorplan (illustrated)

*Copyright conditions. All photos and illustrations are representative only. Floor plans and specifications may be varied by Burbank without notice, the dimensions are diagrammatic only and a Building Contract with final drawings will display correct dimensions and detail. All designs are the property of Burbank and must not be used, reproduced, copied or varied, wholly or in part without written permission from an authorised Burbank representative. Copyright Burbank Australia (NSW) Pty Ltd. ABN 88 610 822 770. NSW BL 295627C ACT BL 2016566.

Call 13 BURBANK
Visit burbank.com.au

OPTION K1

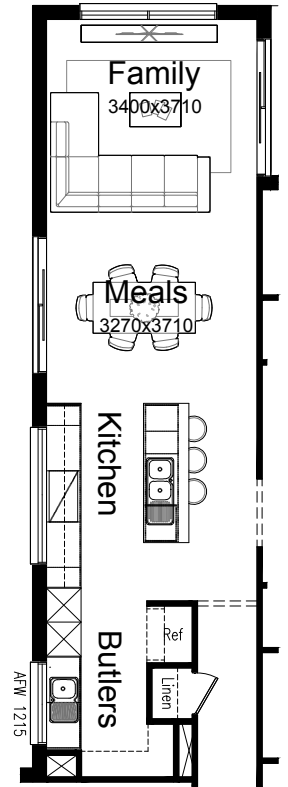
Provide Galley-style Kitchen option including relocated refrigerator space with open shelf over, 900mm retractable rangehood, 900mm cooktop, 900mm under bench oven, 450mm drawer unit, dishwasher provision, microwave provision with pot drawer, 1No. 900mm base cupboard, 3No. 800mm base cupboards, 2No. 450mm base cupboards, 2No. 800mm overhead cupboards, 2No. 450mm overhead cupboards, additional bench top and tiled splashback to suit. Option moves Kitchen benches 390mm into Meals/Family.



OPTION K3

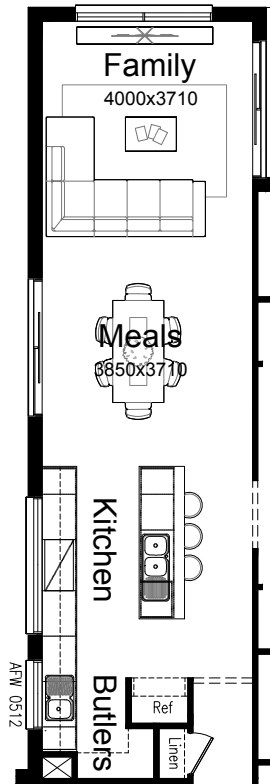
Provide Butler's Pantry Kitchen option including relocated refrigerator space with open shelf over, 900mm retractable rangehood, 900mm cooktop, 450mm drawer unit, dishwasher provision, 2No. 900mm base cupboard, 4No. 800mm base cupboards, 2No. 350mm base cupboards, 2No. 800mm overhead cupboards, 2No. 350mm overhead cupboards, 2No. 600mm wall oven towers with microwave provisions and pot drawers, additional bench top and tiled splashback to suit with removal of bulkhead so bench runs through. Additional single bowl sink and AFW1215 fixed window. Option moves Kitchen benches 1330mm into Meals/Family.

Note: Option not available in conjunction with option LD1, LD2 or IP2.



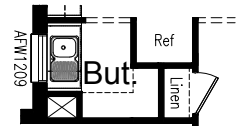
OPTION K2

Provide Butler's Pantry Kitchen option including 900mm retractable rangehood, 900mm cooktop, 900mm under bench oven, 450mm drawer unit, dishwasher provision, microwave provision with pot drawer, 1No. 900mm base cupboard, 4No. 800mm base cupboards, 1No. 450mm base cupboard, 1No. 400mm base cupboard, 4No. 800mm overhead cupboards, 1No. 450mm overhead cupboard, 1No. 400mm overhead cupboard, open shelf over refrigerator space, additional single bowl sink, additional AFW0512 fixed window, additional bench top and tiled splashback to suit with removal of bulkhead so bench and overhead cupboards run through. Option moves Kitchen benches 250mm into Meals/Family.



OPTION BP1

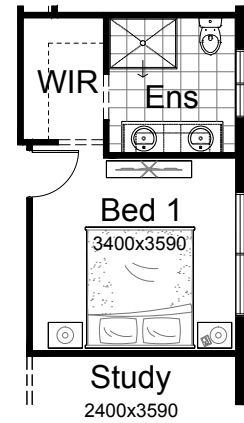
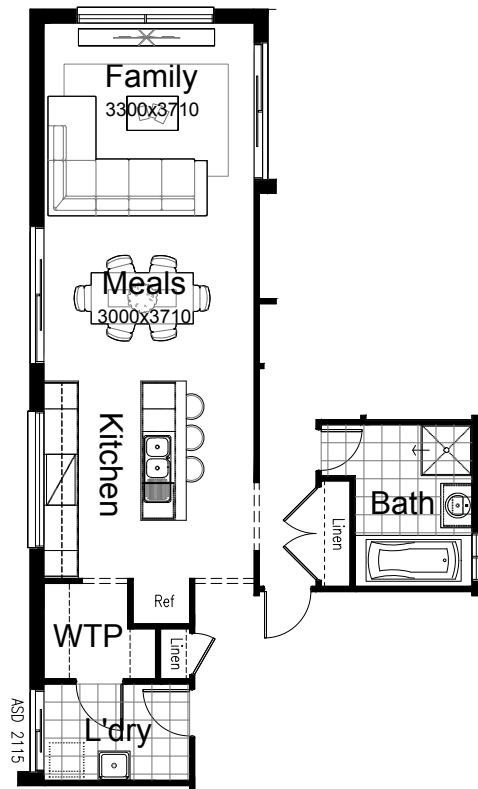
Provide Butler's Pantry option in lieu of Walk-in Pantry, including 1No. 800mm base cupboard, 1No. 300mm base cupboard, single bowl sink and additional bench top and tiled splashback to suit. Additional AFW1209 fixed window.



OPTION LD1

Provide Laundry upgrade with relocated Laundry space, stainless steel trough and cabinet, tiled floor, additional 820mm hinged door and ASD2115 sliding door. Walk-in Pantry becomes a Walk-through Pantry with additional 820mm hinged door to access Laundry. New standard Linen cupboard with 4No. 450mm shelves to replace Laundry space in Passage, Bathroom gains 190mm in width as a result. Option moves Kitchen benches 1790mm into Meals/Family.

Note: Option not available in conjunction with option K3



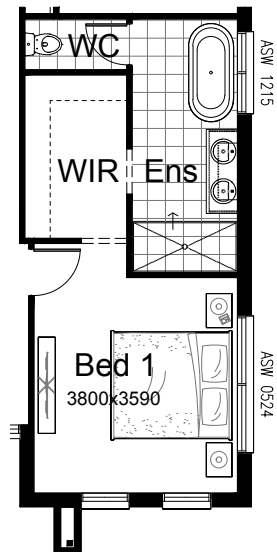
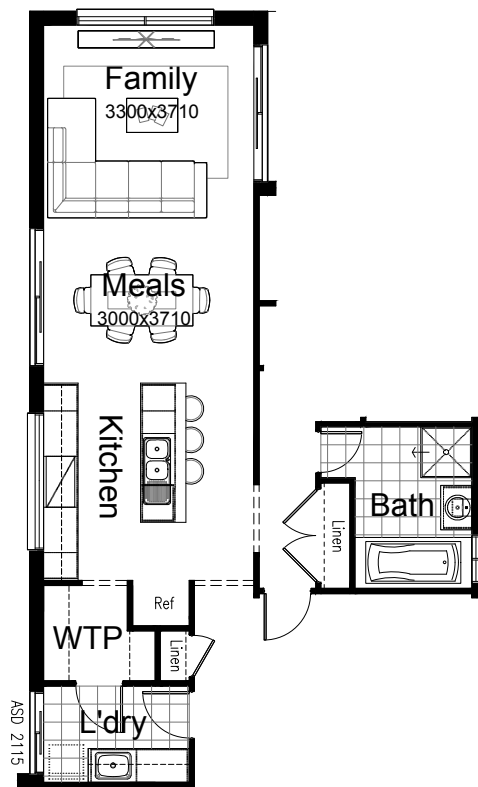
OPTION ENS1

Provide Ensuite option with 1782mm vanity with double basins, 1200x900mm tiled shower base and relocated WC. Option takes 100mm of length from Bed 1 and 130mm of length from Study.

OPTION LD2

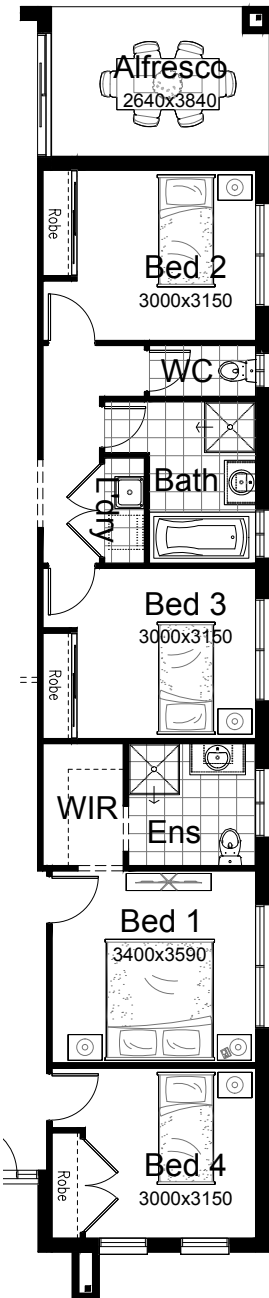
Provide Laundry upgrade with relocated Laundry space, laminate base cupboards and stainless steel inset trough including 2No. 800mm base cupboards, 2No. 800mm overhead cupboards, additional bench top and tiled splash back to suit, tiled floor, additional 820mm hinged door and ASD2115 sliding door. Walk-in Pantry becomes a Walk-through Pantry with additional 820mm hinged door to access Laundry. New standard Linen cupboard with 4No. 450mm shelves to replace Laundry space in Passage, Bathroom gains 190mm in width as a result. Option moves Kitchen benches 1790mm into Meals/Family.

Note: Option not available in conjunction with option K3



OPTION ENS2

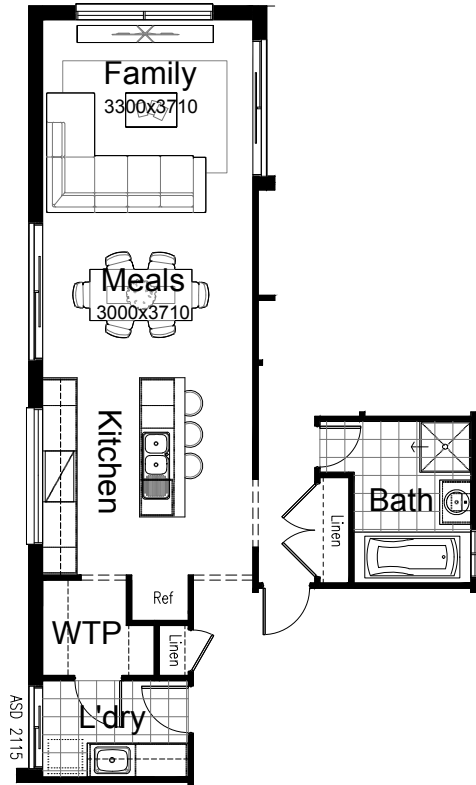
Provide Grand Ensuite option which rearranges the layout and removes Study to the front of the home. Option includes enclosed WC with 720mm hinged door, 1860x900mm tiled shower base, 1482mm vanity with double basins, freestanding bath, ASW1215 sliding window in lieu of standard, additional 1No. 450mm shelving to Walk-in Robe to suit, additional ASW0524 sliding window and Bed 1 gains 300mm in length.



OPTION IP1

Provide 4th bedroom option in lieu of Study. Provide additional 820mm hinged door in lieu of bulkhead, standard built-in Robe with 2No. 720mm hinged door and 450mm shelf and hanging rail. Option takes 360mm of length from Alfresco to accommodate. Change Alfresco sliding door to ASD2121 in lieu of standard.

Note: Option not available in conjunction with Barrington, Manning, Flinders, Nepean or Kingston facades.



OPTION IP2

Provide Bathroom upgrade by rearranging the layout, deleting standard Laundry space to Passage, provide 1282mm vanity with double basins in lieu of standard, provide ASW1215 sliding window in lieu of standard. Option also relocates Laundry space including stainless steel trough and cabinet, tiled floor, additional 820mm hinged door and ASD2115 sliding door. Option moves Kitchen benches 1790mm into Meals/Family.

Note: Option not available in conjunction with option K3